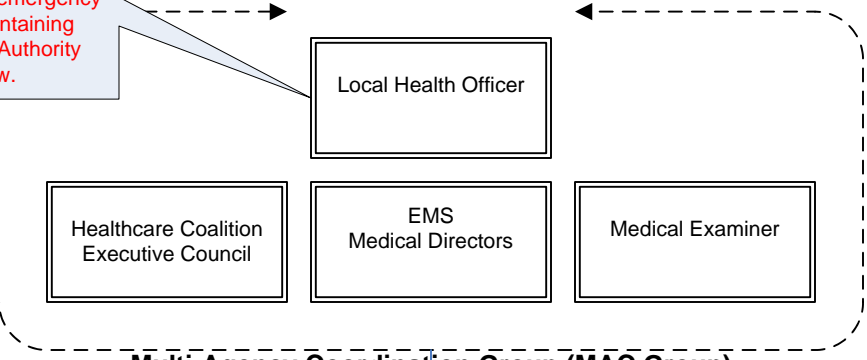


The MAC group utilizes information from the RMRC and briefings from the Area Commander to make policy decisions. The Local Health Officer is the decision maker with guidance from other MAC Group members.

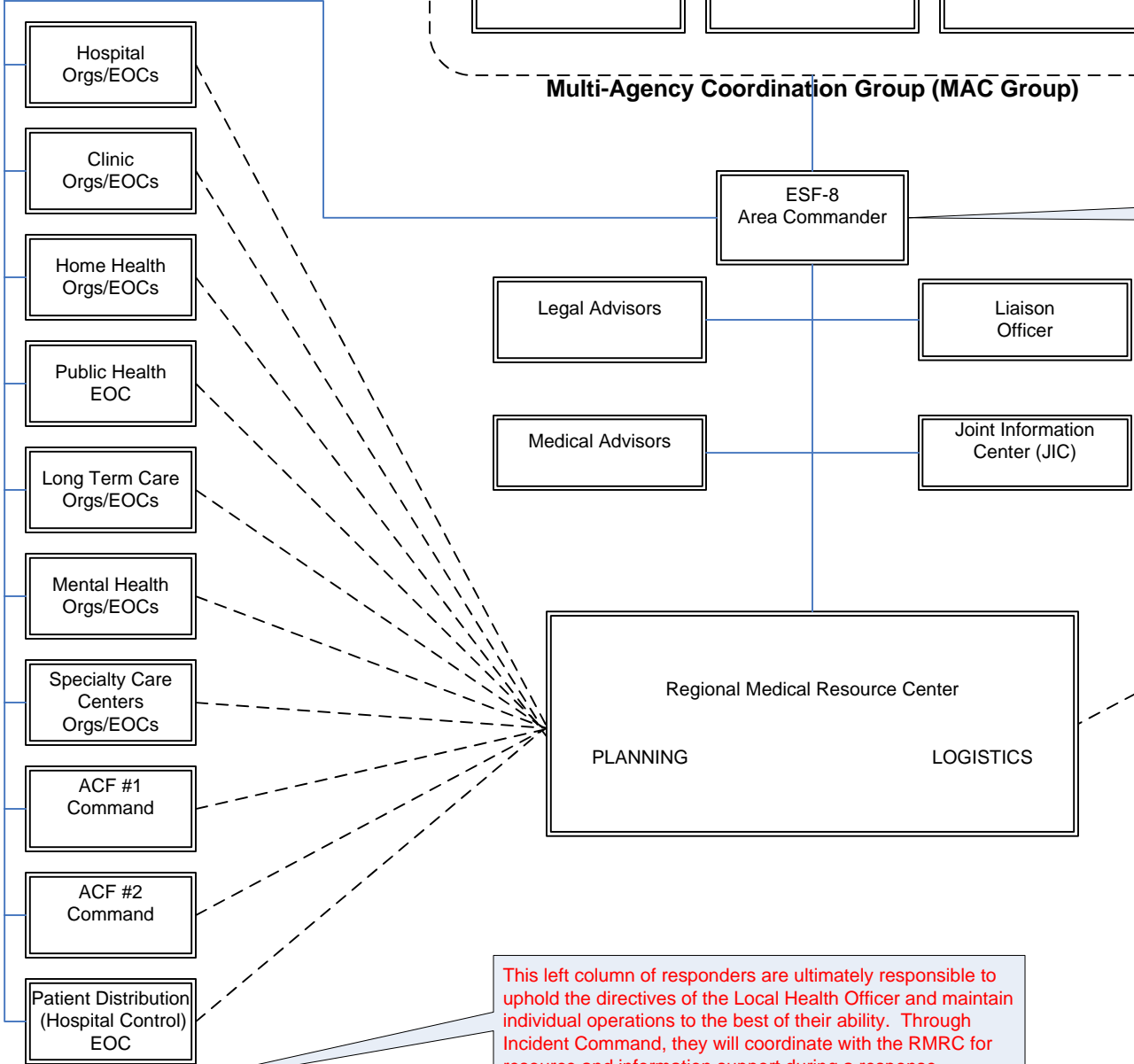
The Local Health Officer is the policy decision maker during emergency response, maintaining Public Health Authority under state law.

Key Terms:
ACF – Alternate Care Facility
EOC – Emergency Operations Center
ESF-8 – Emergency Support Function 8 (Health and Medical Support)



Multi-Agency Coordination Group (MAC Group)

The Area Commander role will be filled by trained staff from Public Health or EMS. It is important to have depth in this role and to staff it based on the expertise required in the response. The Area Commander will report to the Local Health Officer.



Call Center Response will occur through coordination between the Washington Poison Center and the RMRC.

This left column of responders are ultimately responsible to uphold the directives of the Local Health Officer and maintain individual operations to the best of their ability. Through Incident Command, they will coordinate with the RMRC for resource and information support during a response.

DRAFT
Proposed Area Command Structure (ESF-8)

Coordination Relationships - - - - -
Lines of Authority _____

Last Updated 9/20/07